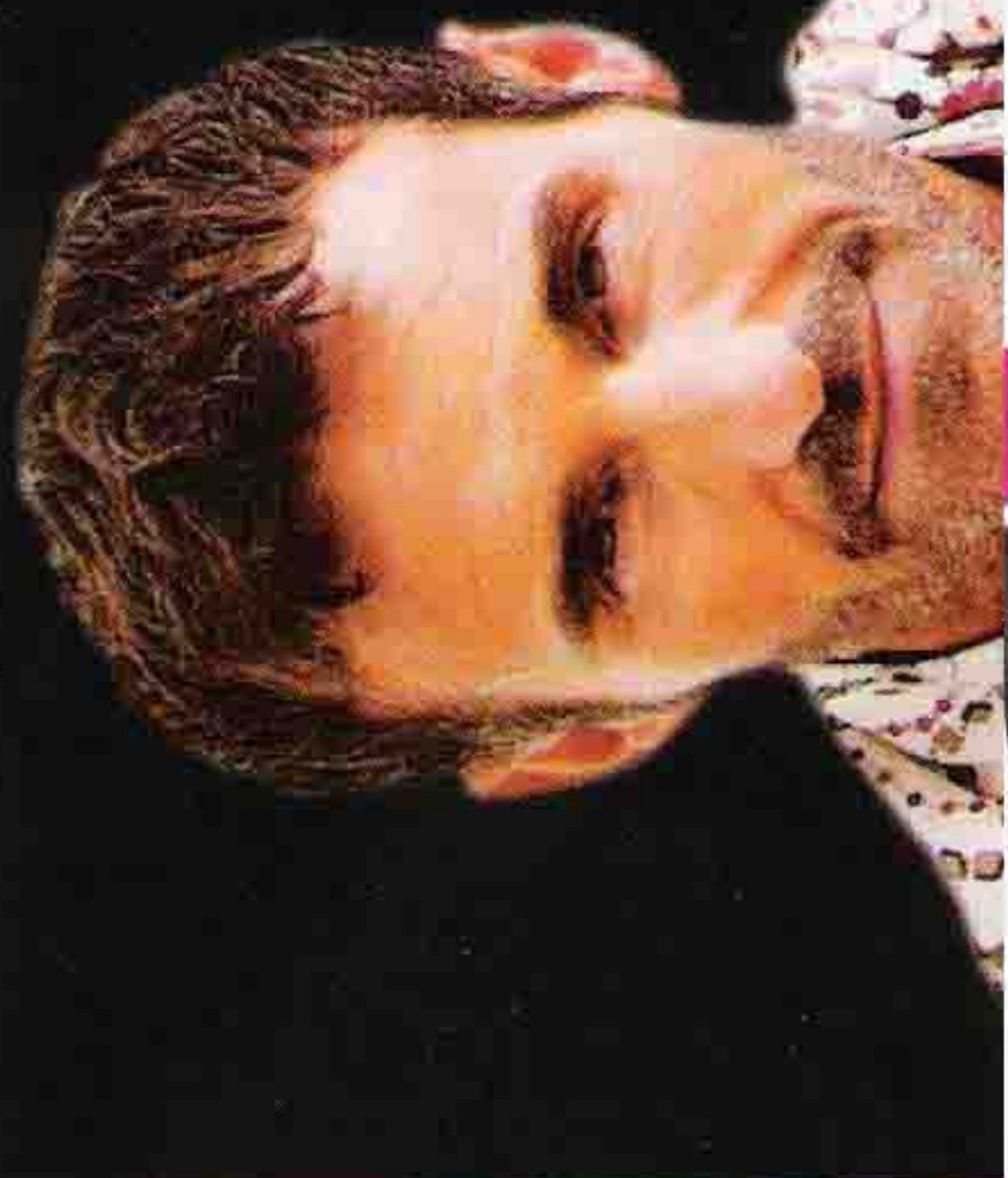


Marti Pellow

EXCLUSIVE

On how Memphis



colour & pout



SCOTLAND'S TOP

How to...

Stop them in their tracks with your lips...

In the last issue we told you about one of this season's big trends – the dramatic eye. But don't worry, we wouldn't hold out on our lovely readers, there are more trends to come in the next couple of issues. But right here is one you have to know about and it's never looked better – the power pout. You are going to have them falling at your feet when they cop a load of your smackers!

RRP: £24 from www.skin-health.co.uk

Pare it down

In order for your mouth to make a dramatic statement you should really go easy with the cosmetics on your other features. We all know how much make-up is involved in the 'natural look' so you won't have to completely go without. The face should be matt and flawless and we recommend i.d bareMinerals to be dusted on to create an even tone and eradicate shine.

Covering your under-eye shadows is a must with this immaculate look so make sure you read our *Tried and Tested* feature to see which concealer's best for you. Next you have to get the perfect eye. This look has more than a touch of the 50s starlet about it so your eyebrows have to be tamed, but under no circumstances over-plucked and pencil thin. Apply a pearly oyster-coloured eyeshadow all over the eyelids right up to the brow and work a slightly darker sandy/beige tone into the crease. Lining the eyes is very important when you wear pale colours. Run a thin line of liquid liner along the top lashes



with a slight flick at the end but don't be tempted to go overboard – this is subtlety at it's best! Apply false lashes if you feel bare. You can get some great single ones on the high street that just slot in with your existing lashes and provide that extra boost, even adding just a couple at the outer corners will make all the difference.

Vamp it up

Before you just slap on the lippy you have to realise that this isn't just any lip statement, this is the "oh my" factor and application is key. Marks & Spencer have some good lip brushes starting from (£6 www.marksandspencer.co.uk). These limit the chances of lipstick bleeding into the lines around your mouth. If you are worried about the lines in or around your lips try Dr Denese Perfect Pucker™ which radically reduces the appearance of those pesky creases. So now it's the moment you have been waiting for, time to apply the lipstick. We recommend keeping it matt

red or berry to pack a real punch – try The Body Shop's range of 23 shades (£6.50, www.thebodyshop.com).

Keep inside the natural lip line (drawing over it does not make you look like you have bigger lips, it makes you look like The Joker). Dot a shimmery iridescent eyeshadow in the middle of your bottom lip for extra plumpness and on the edges of your cupid's bow. You're done so get out and a pout!

